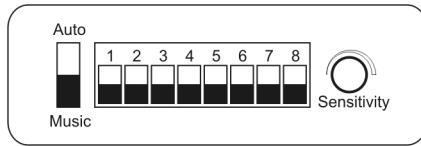


# RGB LED PAR User Guide

## 1. Auto Change Mode

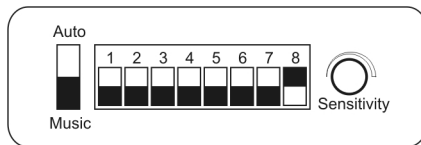


Set all the dip switches to OFF.

For music control set the switch to “Music”.

For potentiometer control set the switch to “Auto”.

## 2. Auto Fade Mode



Set dip switch 8 to ON.

The fade time may be select by set the dip switches to ON:

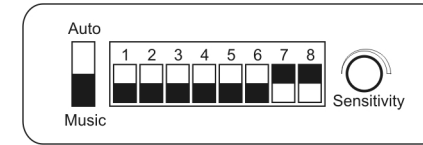
DIP 1	DIP 2	DIP 3	DIP 4	DIP 5	DIP 6
2.5s	5s	10s	20s	40s	80s

If dipswitch 1 to 6 is set to OFF the fade time for one pattern is 10:30min.

The related time of dip switch 1 to 6 can be added:

Dip switch 1 and 2 to ON, fade time = 2,5s + 5s = 7,5s

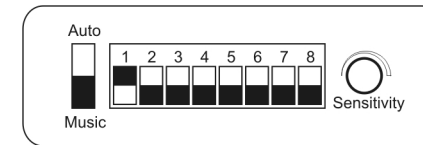
## 3. Manual Mode



Set dip switch 7 and 8 to ON.

RED	DIP 1,2	OFF/ OFF	ON/OFF	OFF/ON	ON/ON
GREEN	DIP 3,4				
BLUE	DIP 5,6				
Brightness		0	25%	50%	100%

## 4. DMX Mode



Set dip switch 8 to OFF and at least one of dipswitch 1 to 7 to ON.

The channel usage is according to this table:

CH-1	CH-2	CH-3	CH-4	CH-5
MODE	RED	GREEN	BLUE	Speed
0 - 63 = RGB Control	0 - 255 = DIM	0 - 255 = DIM	0 - 255 = DIM	NA
64 - 127 = 7 color fade	NA	NA	NA	11 - 100 = fast speed to low speed
128 - 191 = 7 color change				151 - 255 = speed control by unit, by music or Potentiometer
192 - 255 = 3 color change				

The DMX channels may be set by dipswitches 1 to 7, in the range of DMX channel 1 to 123. Dipswitch 1 is first channel. The channels may be added:

DIP 1	DIP 2	DIP 3	DIP 4	DIP 5	DIP 6	DIP 7
1ch	2ch	4ch	8ch	16ch	32ch	64ch