

EM26

Ultra-compact trapezoid enclosure

features

- ▶ Ultra-compact trapezoid enclosure
- ▶ Ferrofluid cooled 1" (25mm) HF driver
- ▶ High SPL capability

applications

- ▶ Background music for clubs and bars
- ▶ Theatre delay/in-fill
- ▶ AV presentations



The EM26 is equipped with a long excursion 8" bass driver and ferrofluid cooled 1" HF compression driver on a 70° horizontal x 50° vertical constant directivity horn. Utilising a high power passive crossover network, the EM26 can be used with or without the EMXIA system controller. For ease of installation, the enclosure is fitted with threaded inserts for a rear bracket and eyebolts.

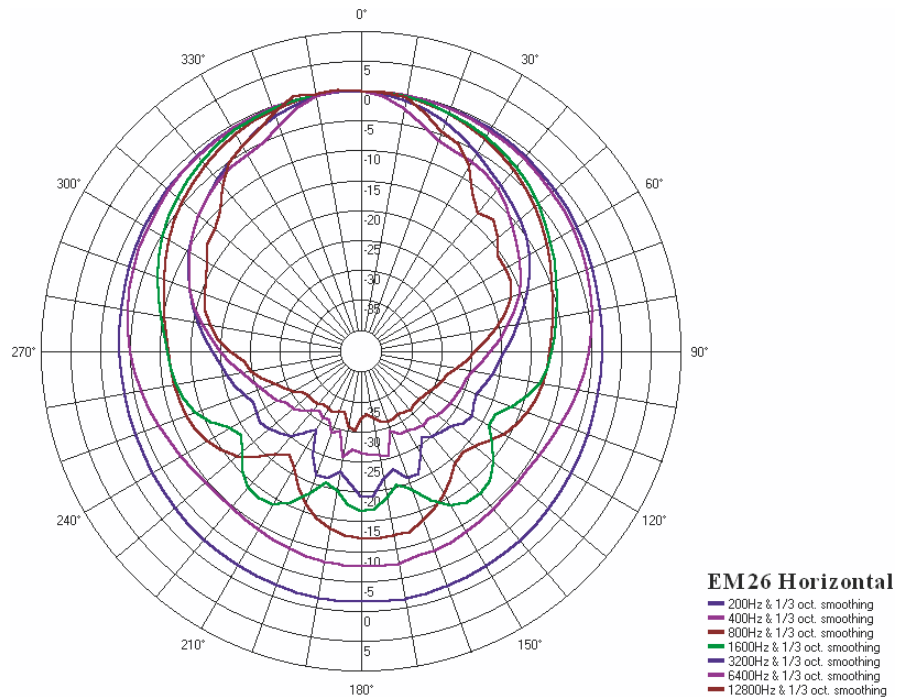
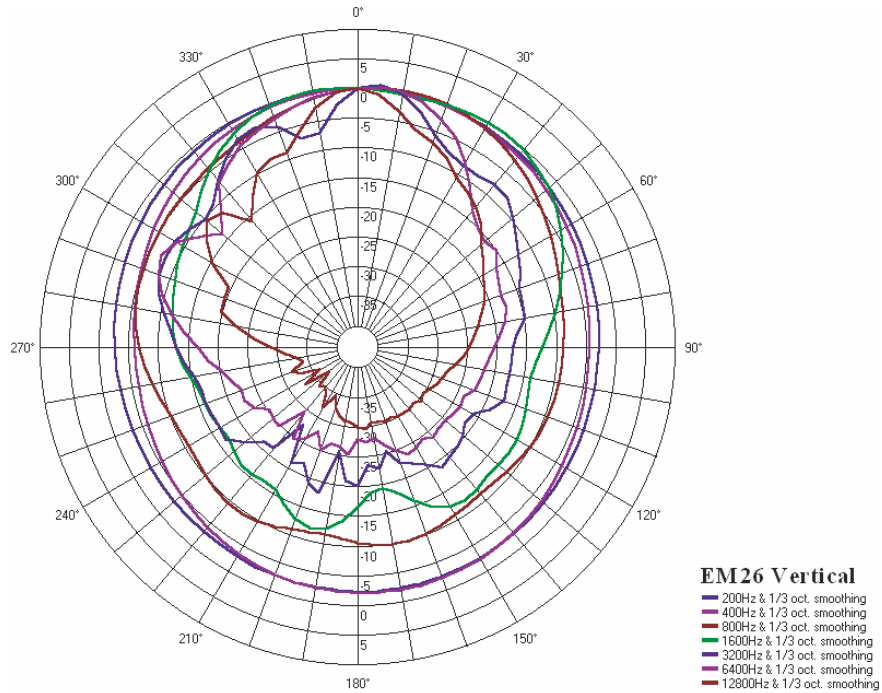
Impressively compact, with the versatility for foreground or background sound applications, the EM26 is a full-range, two-way passive, trapezoid loudspeaker.

EM26

Ultra-compact trapezoid enclosure

polar plots

architectural



Century Point, Halifax Road, Cressex Business Park,
High Wycombe, Buckinghamshire HP12 3SL, England.
Telephone: +44 (0)1494 535312 Facsimile: +44 (0)1494 438669
E-mail: info@martin-audio.com
All information is Copyright © 2003 Martin Audio Ltd.



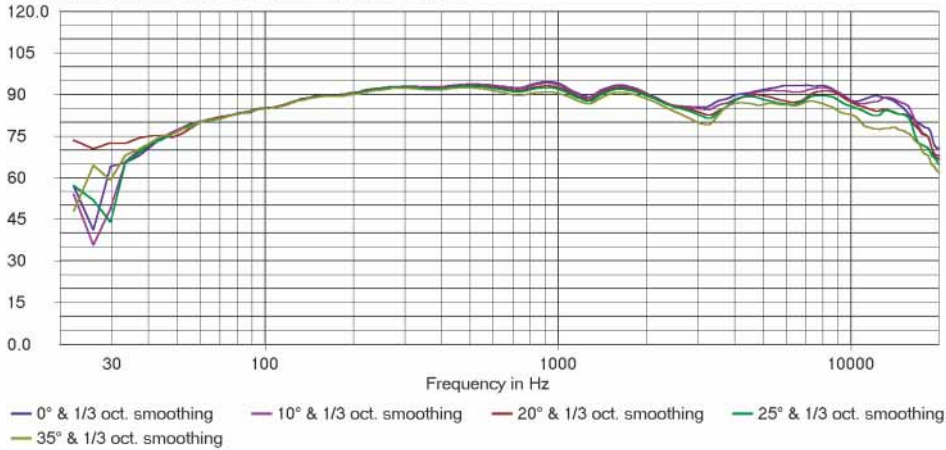
EM26

Ultra-compact trapezoid enclosure

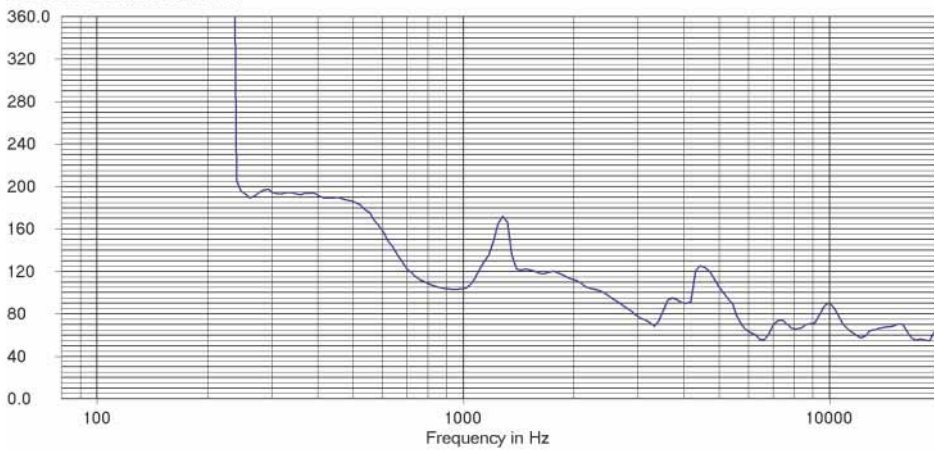
frequency responses

architectural

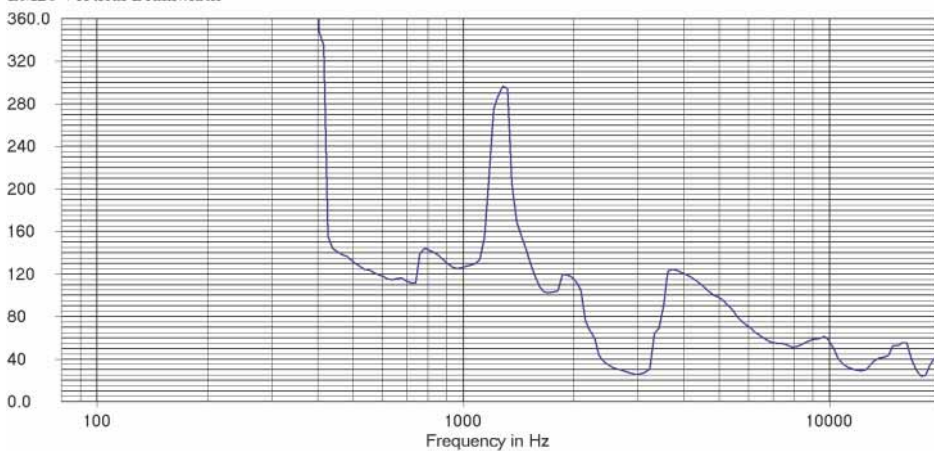
EM26 Horizontal Magnitude in dB SPL/2.83V at 1 meter



EM26 Horizontal Beamwidth



EM26 Vertical Beamwidth



Century Point, Halifax Road, Cressex Business Park,
High Wycombe, Buckinghamshire HP12 3SL, England.
Telephone: +44 (0)1494 535312 Facsimile: +44 (0)1494 438669
E-mail: info@martin-audio.com
All information is Copyright © 2003 Martin Audio Ltd.

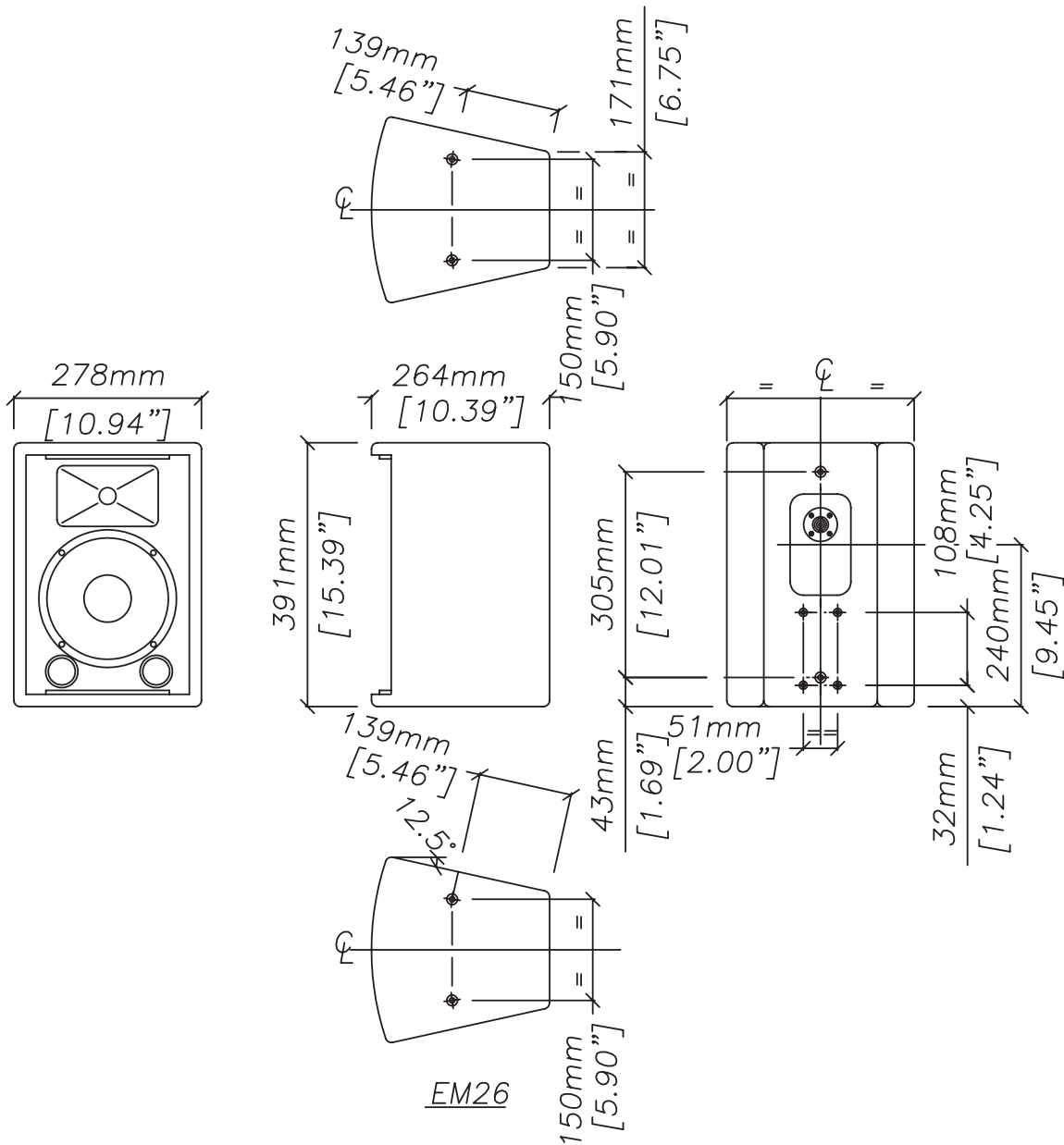


EM26

Ultra-compact trapezoid enclosure

overall dimensions

architectural



Century Point, Halifax Road, Cressex Business Park,
High Wycombe, Buckinghamshire HP12 3SL, England.
Telephone: +44 (0)1494 535312 Facsimile: +44 (0)1494 438669
E-mail: info@martin-audio.com
All information is Copyright © 2003 Martin Audio Ltd.



EM26

Ultra-compact trapezoid enclosure

technical specifications

TYPE	Ultra-compact, two-way passive trapezoid
FREQUENCY RESPONSE (1)	70Hz-18kHz \pm 3dB
DRIVERS	8" (200mm) bass driver 1" (25mm) driver, ferrofluid cooled
RATED POWER (2)	125W AES, 500W peak
RECOMMENDED AMPLIFIER	200-300W into 4 ohms
SENSITIVITY (3)	94dB
MAXIMUM SPL (4)	114dB continuous, 120dB peak
NOMINAL IMPEDANCE	8 ohms
DISPERSION (-6dB)	70° horizontal, 50° vertical
CROSSOVER	3kHz passive
ENCLOSURE	12 litre, vented
FINISH	Textured green paint
PROTECTIVE GRILLE	Grey perforated steel
CONNECTORS	1 x Neutrik NL4
FITTINGS	4 x M6 inserts for Omnimount 75 6 x M8 inserts
DIMENSIONS	(W) 278mm x (H) 391mm x (D) 264mm (W) 10.9ins x (H) 15.4ins x (D) 10.4ins
WEIGHT	10kg (22lbs)

accessories

HKTCT05	8mm Shouldered Eye Bolt
HTKM10	Wall Bracket (supplied in pairs)

Notes

- (1) Measured on-axis in half space at 2 metres, then referred to 1 metre.
- (2) AES Standard ANSI S4.26-1984.
- (3) Measured in half space conditions at 2 metres with 1 watt input, using band limited pink noise, then referred to 1 metre.
- (4) Measured in half space conditions at 2 metres using band limited pink noise, then referred to 1 metre.

Trade Descriptions Act

Due to Martin Audio's policy of continuing improvement, we reserve the right to alter these specifications without prior notice. Martin Audio is committed to refining state of the art sound reinforcement, combining in-depth product and field applications research with advanced manufacturing techniques. Every Martin Audio product is built to the highest manufacturing standards and rigorously tested to ensure that it meets the performance criteria specified in the design.

architectural and engineering specifications

The loudspeaker system shall be of the two-way passive type consisting of one 8" (200mm) direct radiating reflex loaded low frequency transducer and one 1" (25mm) HF ferrofluid cooled compression driver mounted on a constant directivity horn in a trapezoidal enclosure. The enclosure shall be fitted with threaded inserts for wall and ceiling mounting. Low and high frequency sections shall be integrated by an internal 3kHz passive crossover network.

Performance of the loudspeaker system with its electronic controller shall meet or exceed the following criteria:

Frequency response measured 1 metre on axis shall be 70Hz-18kHz \pm 3dB.

High frequency dispersion at -6dB points shall be 70° H x 50° V.

Power handling shall be 125W AES, 500W peak.

Rated impedance shall be 8 ohms.

Maximum SPL measured at 1 metre on axis shall be 114dB continuous, 120dB peak.

Dimensions (W) 278mm x (H) 391mm x (D) 264mm (10.9ins x 15.4ins x 10.4ins).

Weight 10kg (22lbs).

The loudspeaker system shall be the Martin Audio EM26.

Century Point, Halifax Road, Cressex Business Park,
High Wycombe, Buckinghamshire HP12 3SL, England.
Telephone: +44 (0)1494 535312 Facsimile: +44 (0)1494 438669
E-mail: info@martin-audio.com
All information is Copyright © 2003 Martin Audio Ltd.

